

VO-AG SHOP PLUMBING FLOOR PLAN

SCALE: 1/8" = 1'-0"

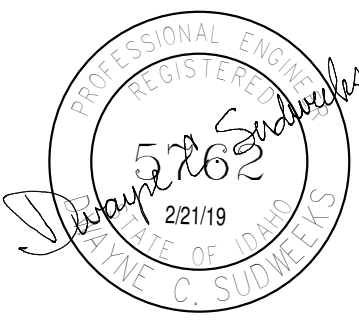


PLAN NOTES:

- EXISTING LP GAS FIRED UNIT HEATERS AND ALL ASSOCIATED GAS PIPING TO REMAIN. PROTECT DURING CONSTRUCTION AND MAINTAIN OPERATION.
- EXISTING LP GAS FIRED UNIT HEATER TO REMAIN. PROTECT DURING CONSTRUCTION. FIELD VERIFY EXACT SIZE AND LOCATION OF EXISTING PIPING.
- CONNECT 3/4" LP GAS LINE TO EXISTING LP GAS LINE. RUN TO NEW UNIT HEATER AS SHOWN AND CONNECT WITH SHUT-OFF VALVE AND FLEXIBLE HOSE. REFER TO DETAIL H.P3.1 FOR TYPICAL LP GAS LINE CONNECTION.
- EXISTING COLD WATER HOSE BIBB AND/OR COMPRESSED AIR COUPLER TO REMAIN. PROTECT OUTLETS DURING CONSTRUCTION. CONNECT NEW COMPRESSED AIR PIPING TO EXISTING AND EXTEND THRU WALL INTO NEW SHOP ADDITION. PROVIDE NEW COUPLER TO NEW PIPING AND SECURE TO WALL. REFER TO DETAIL DP3.1 FOR TYPICAL COUPLING INSTALLATION.
- CONNECT NEW 1/2" COLD WATER LINE AND NEW 1/2" COMPRESSED AIR LINE TO EXISTING CORRESPONDING PIPING. EXTEND THRU WALL AND CONNECT TO NEW WALL MOUNTED OUTLETS AS SHOWN. KEEP PIPING UP AS HIGH AS POSSIBLE IN SHOP. FIELD VERIFY EXACT SIZES AND LOCATIONS OF EXISTING AIR AND COLD WATER PIPING IN EXISTING SHOP.
- MECHANICAL CONTRACTOR TO PROVIDE AND INSTALL NEW LP GAS FIRED FURNACE. PLUMBING CONTRACTOR TO ROUGH-IN AND CONNECT 3/4" LP GAS PIPING. CONNECT TO EQUIPMENT WITH SHUT-OFF VALVE AND FLEXIBLE HOSE. REFER TO DETAIL HP3.1 FOR TYPICAL GAS LINE CONNECTION. RUN 3/4" CONDENSATE DRAIN LINE TO NEAREST FLOOR DRAIN.
- MECHANICAL CONTRACTOR TO PROVIDE AND INSTALL NEW LP GAS FIRED UNIT HEATER. PLUMBING CONTRACTOR TO ROUGH-IN AND CONNECT 3/4" LP GAS PIPING. CONNECT TO EQUIPMENT WITH SHUT-OFF VALVE AND FLEXIBLE HOSE. REFER TO DETAIL HP3.1 FOR TYPICAL GAS LINE CONNECTION.
- EXISTING SAND AND GREASE INTERCEPTOR IN FLOOR TO REMAIN. FIELD VERIFY EXACT LOCATION OF INTERCEPTOR AND PIPING.
- CONNECT NEW 4" WASTE LINE TO EXISTING 4" WASTE LINE BELOW FLOOR UPSTREAM OF EXISTING INTERCEPTOR. MATCH NEW PIPING ELEVATION WITH EXISTING AND RUN TO NEW FLOOR SINKS AS SHOWN. FIELD VERIFY INVERTS OF EXISTING WASTE PIPING AND GRADE NEW PIPING UP FROM POINT OF CONNECTION. EXISTING CONCRETE FLOOR TO BE CUT AND PATCHED AS REQUIRED FOR INSTALLATION OF NEW PIPING. COORDINATE WITH GENERAL CONTRACTOR.
- PROVIDE AND INSTALL WALL MOUNTED EMERGENCY EYE WASH STATION AS SPECIFIED. DROP WASTE PIPING DOWN BELOW FLOOR AND CONNECT TO 4" NEW WASTE LINE AS SHOWN. REFER TO DETAIL JP3.1 FOR TYPICAL INSTALLATION.
- PROVIDE 18-19-24 DEEP CATCH BASIN WITH TRAFFIC RATED GRATE. RUN 4" WASTE LINE TO EXISTING SAND AND GREASE INTERCEPTOR AS SHOWN. NO P-TRAP REQUIRED AT CATCH BASIN. REFER TO DETAIL FP3.1 FOR TYPICAL FIELD BUILT BASIN. PRE-FABRICATED CATCH BASINS NEED TO BE PRE-APPROVED BEFORE BIDDING.

gpc architects

18 N. Main St., Ste. 200
Driggs, Idaho 83422
208.354.8036
www.gpcarchitects.com

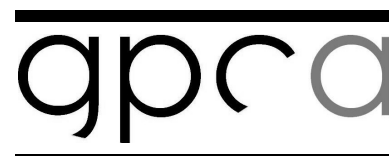


Ownership & Use of Documents

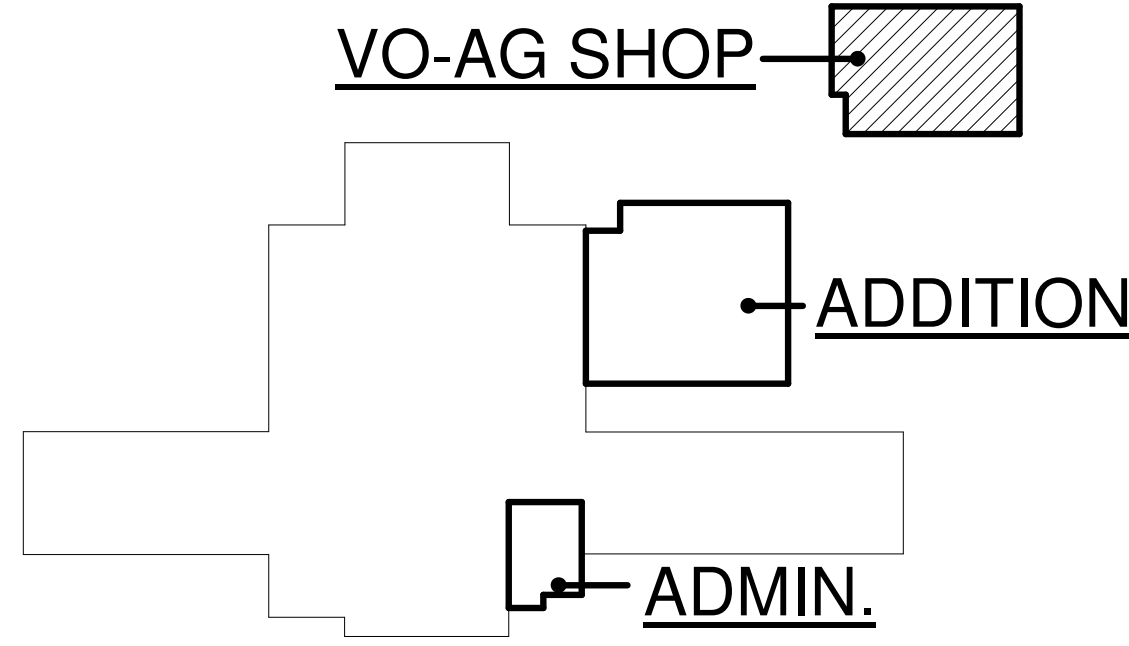
Drawings and specifications, as instruments of professional service are and shall remain the property of the architect. These documents are not to be used in whole or in part for any project or purposes whatsoever, without the prior specific written authorization of GPC Architects PLLC.



TETON SCHOOL DISTRICT 401
TETON HIGH SCHOOL ADDITION



KEY PLAN



revisions

no.	description	date

project: 18003

date: 02/22/2019

VO-AG SHOP
PLUMBING
FLOOR PLAN

sheet:

P1.2